

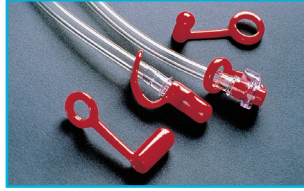
**MEDICAL AND BIO-PROCESSING APPLICATIONS**

Specialised Products & Applications

Health industry professionals appreciate the timesaving and ease-of-use of CPC's USP Class VI compliant couplings. Polysulfone, polycarbonate and ABS couplings provide worry-free operation in critical applications, including bioprocessing (cell culture media packaging), disposable (tube sets) and device (dialysis equipment, blood pressure monitoring, etc.).



**MPC / MPX Series**



**Tethered Caps & Plugs**



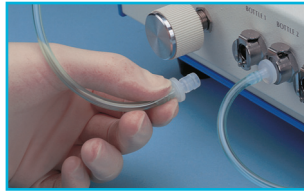
**SaniQuik**



**Sanitary Couplings**



**HFC39 Series**



**Nu-Seal™ Disposable**



**MPU Series**



**Steam-Thru Series**

**SEMI-CONDUCTOR AND CHEMICAL FLUID APPLICATIONS**

CPC's award winning ChemQuik family of ultra-pure, non-spill quick disconnect couplings and DrumQuik dip-tubes for drums are designed for high-purity applications such as semiconductor and pharmaceutical manufacturing, where a non-metallic coupler, chemically resistant materials and a contamination free fluid flow path are the highest importance.



**CQH Series**



**CQV Series**



**CQN Series**



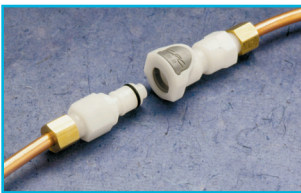
**DrumQuik Series**

**FOOD, BEVERAGE AND WATER APPLICATIONS**

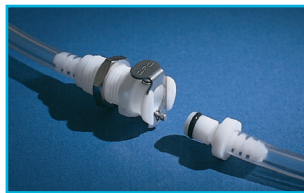


CPC provides NSF listed quick disconnect couplings designed specifically for plastic and copper tubing used in applications for hot and cold beverage machines, in-line filters and bag-in-box condiments. With the speed and convenience of CPC's quick disconnect couplings, the service professional can save money by reducing time spent on maintenance and installation calls.

These couplings conform to listing requirements of NSF standard C-2 for food equipment.



**APC Series**



**PMC Series**



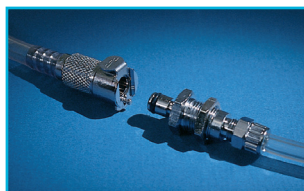
**PLC Series**



**HFC12 Series**



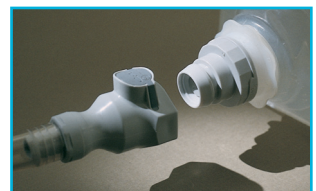
**HFC35 Series**



**MC / LC Series**



**MC / LC Stainless Steel**



**Universal Dispensing**